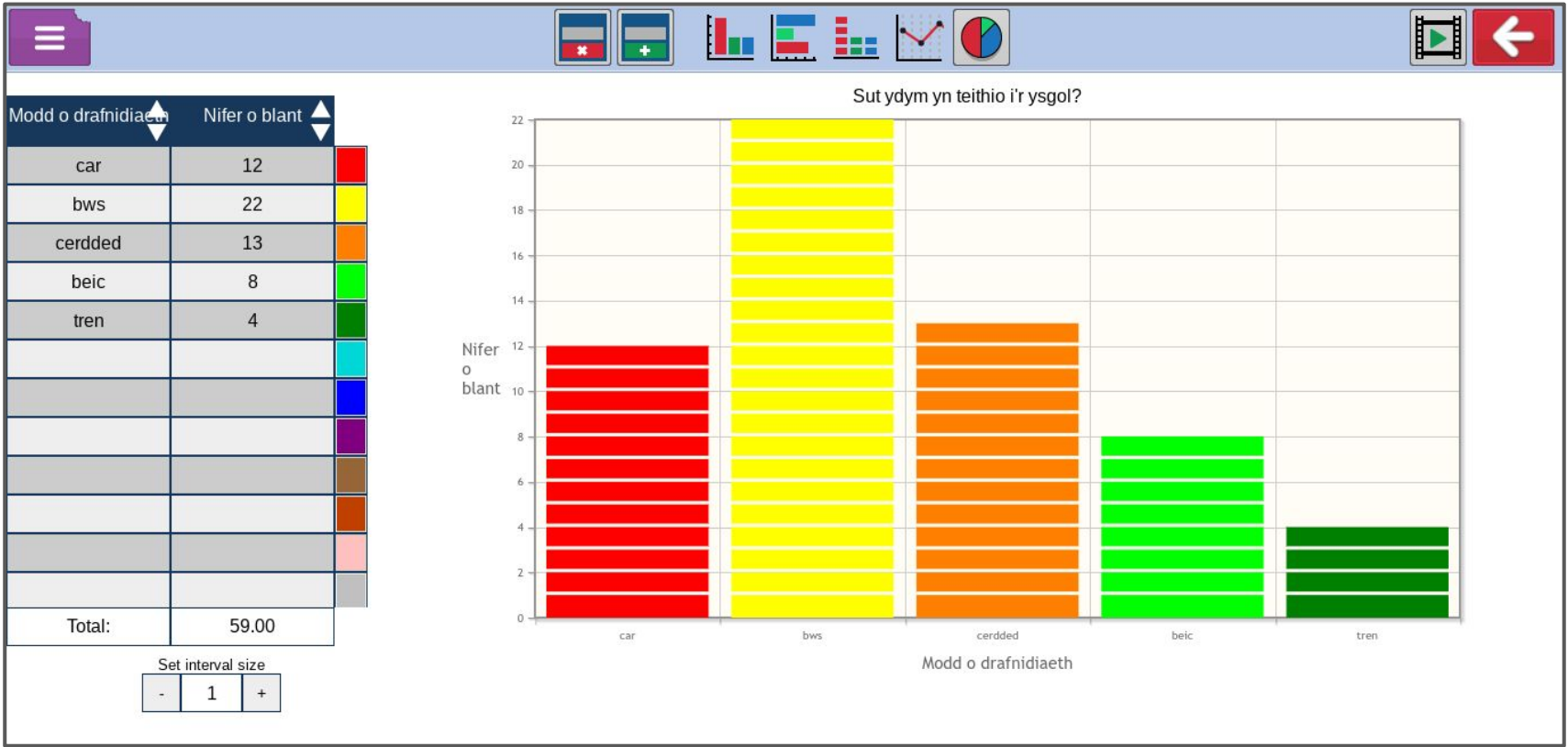


Ychwanegu Dolen Gyswilt o Purple Mash i Google Classroom

-

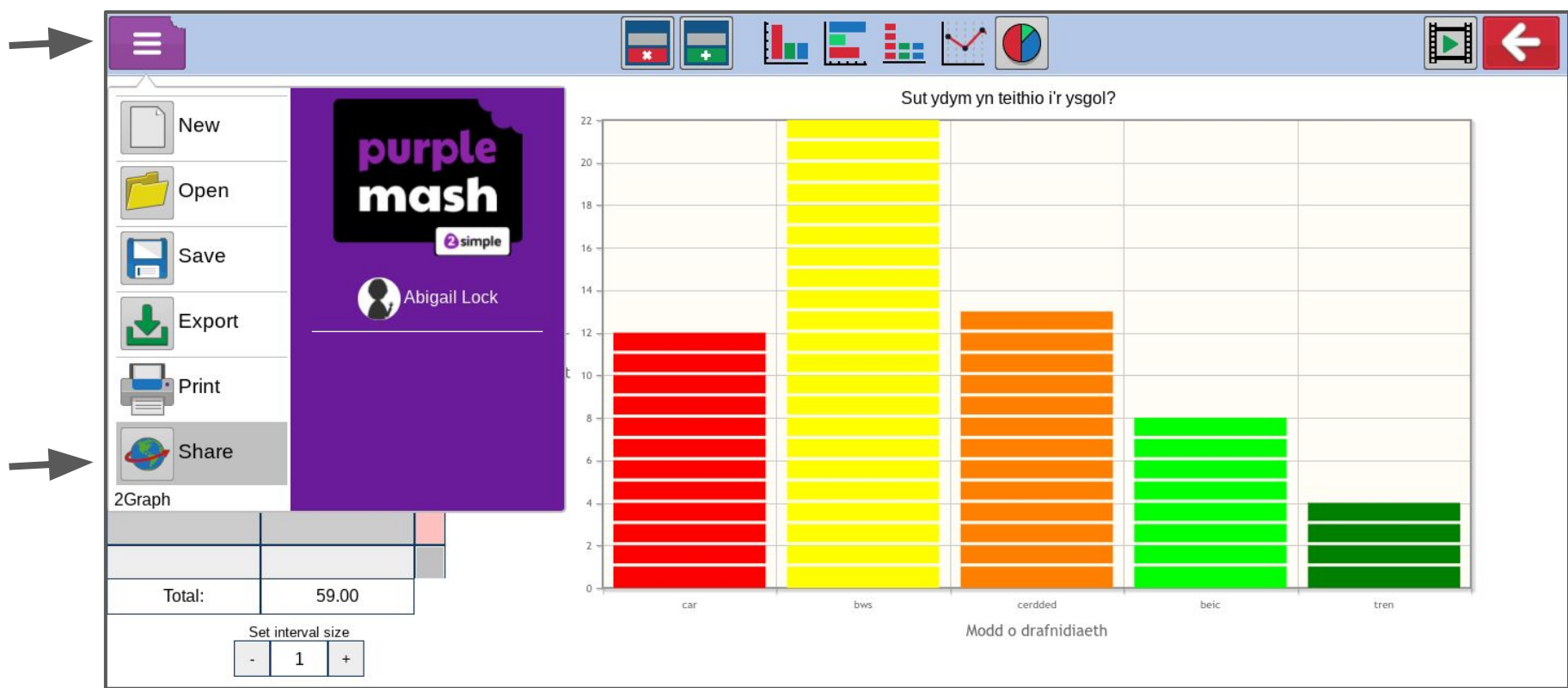
Adding a Link from Purple Mash to Google Classroom





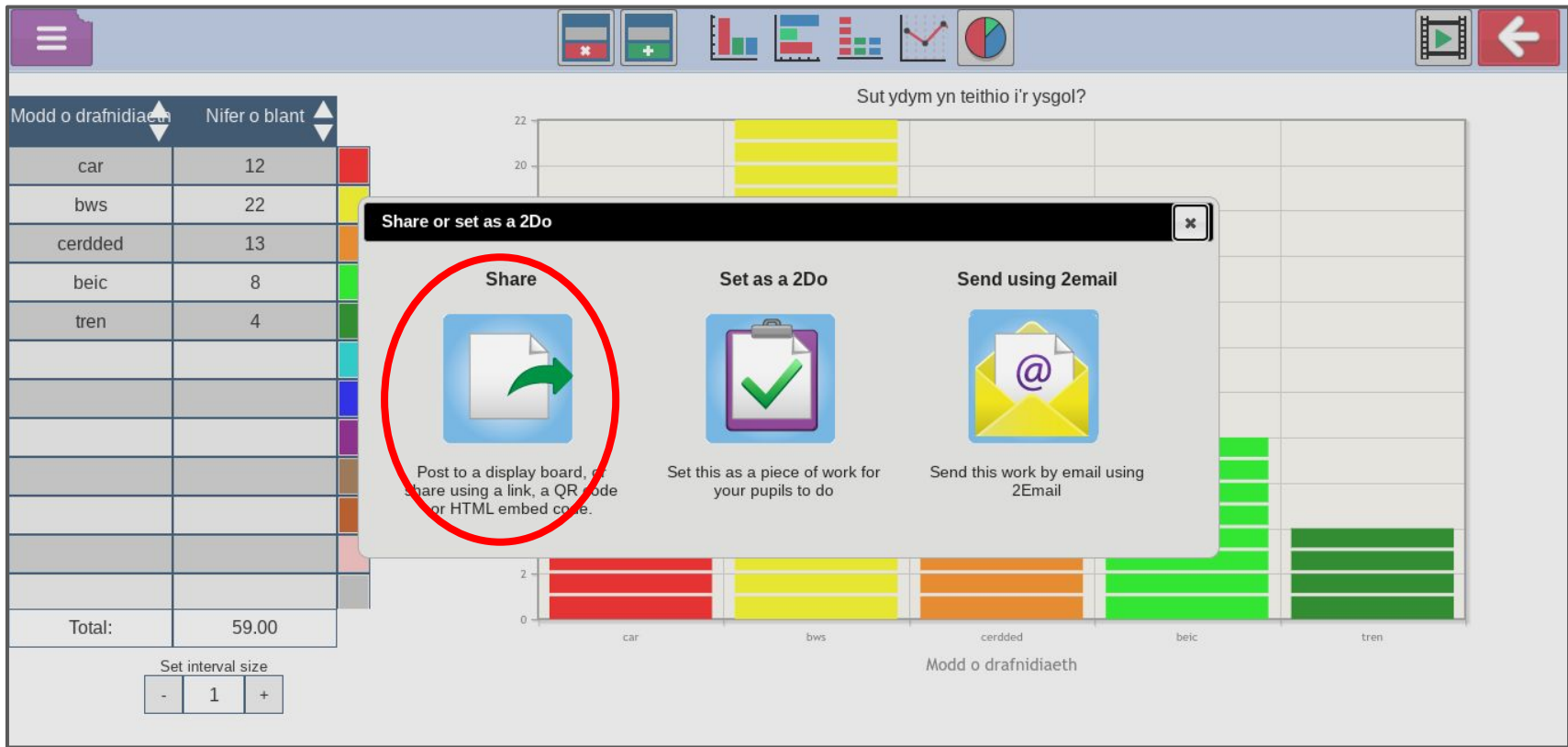
Cwblhewch y gweithgaredd sydd wedi ei osod i chi gan eich athro / athrawes dosbarth ar Purple Mash yn gyntaf.

Complete the task that has been set by the class teacher on Purple Mash first.



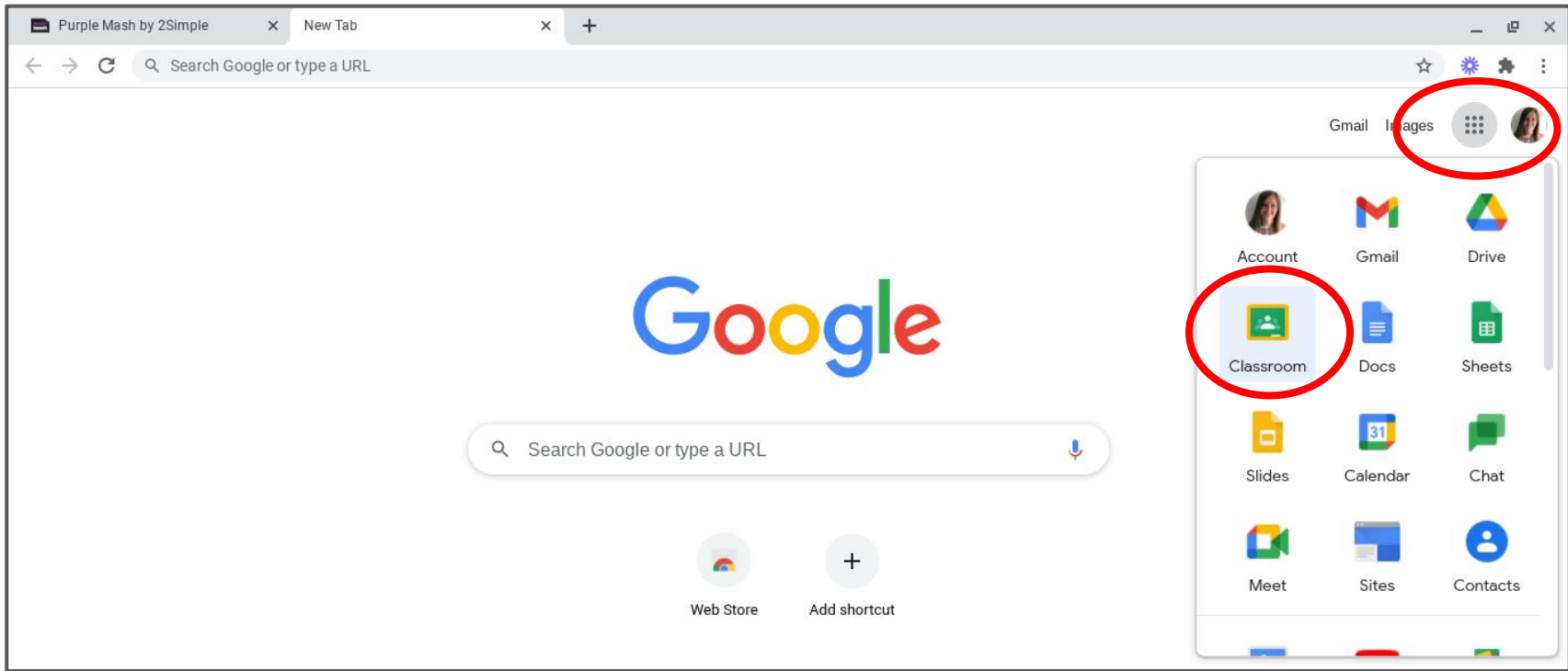
Unwaith rydych wedi gorffen y dasg, gwasgwch y ddewislen borffor yn y gornel chwith ac yna gwasgwch 'Share'.

Once you've completed the task, press the purple menu button at the top left hand corner and then press 'Share'.



Nesaf, gwasgwch y botwm 'Share.'

Next, press the 'Share' button.



Nawr bydd angen agor tudalen / tab newydd ar eich cyfrifiadur neu declyn ac agor Google Classroom. Cofiwch fod angen mewngofnodi i Google gyda'ch manylion ysgol.

Now you will need to open a new page / tab on your computer or device, then open Google Classroom. Remember you need to log into Google with your school account details.

The screenshot shows the Blackboard LMS interface for TGCh Abercynnon. At the top, there are three tabs: 'Stream', 'Classwork', and 'People'. The 'Classwork' tab is highlighted with a red circle. Below the tabs is a banner for TGCh Abercynnon featuring an illustration of a laptop, tablet, and smartphone. On the left, there is a 'Upcoming' section with the text 'Due Thursday Graff bar - trafndiaeth' and a 'View all' link. The main content area shows a post from TGCh Abercynnon: 'Share something with your class...' followed by 'TGCh Abercynnon posted a new assignment: Graff bar - trafndiaeth' with a timestamp of '8:51 AM (Edited 8:52 AM)'. This post is circled in red. Below it is another post from TGCh Abercynnon dated 'Nov 12' with the text 'Bore da plant Abercynnon!'. A help icon (?) is visible in the bottom left corner.

Agorwch y dasg sydd wedi ei osod i chi gan yr athro / athrawes dosbarth, naillai trwy agor y dasg ar y Stream neu trwy fynd i Classwork.

Open the task that has been set by the class teacher either by clicking on the assignment on the 'Stream' or by pressing 'Classwork.'

Stream **Classwork** People

View your work Google Calendar Class Drive folder

Graff bar - trafndiaeth Due Nov 19

Posted 8:51 AM (Edited 8:52 AM) Assigned

Casglwch ddata o fewn eich dosbarth ynglŷn â sut mae pawb yn teithio i'r ysgol.

Defnyddiwch Purple Mash i greu graff bar i gyflwyno'ch canfyddiadau.

Ychwanegwch ddolen gyswilt o'ch gwaith ar Purple Mash i Classroom cyn gwasgu 'Turn in.'

[View assignment](#)

Gwaith Ymchwil / Research Work Posted Nov 12

Diogelwch ar y We / Internet Safety Due Nov 15

Gwasgwch ar y dasg gywir, efallai bydd eich athro / athrawes wedi gadael disgrifiad / cyfarwyddiadau i chi ar gyfer y dasg. Yna gwasgwch 'View Assignment.'

Click on the task, maybe the class teacher has left a short description / instructions for the task below the title. Then click 'View assignment.'

Graff bar - trafndiaeth

TGCh Abercynon • 8:51 AM (Edited 8:52 AM)

Due Nov 19

Casglwch ddata o fewn eich dosbarth ynglŷn â sut mae pawb yn teithio i'r ysgol.

Defnyddiwch Purple Mash i greu graff bar i gyflwyno'ch canfyddiadau.

Ychwanegwch ddolen gyswllt o'ch gwaith ar Purple Mash i Classroom cyn gwasgu 'Turn in.'

Class comments



Add class comment...

Your work Assigned

+ Add or create

Google Drive ▶

Link

File

Create new

- Docs
- Slides
- Sheets
- Drawings

Yn gyntaf gwasgwch y botwm 'Add or create' ar ochr dde'r dudalen cyn dewis yr opsiwn 'Link.'

First click on the 'Add or create' button at the right hand side of the screen before pressing 'Link' on the drop down list.

☰ TGCh Abercynon

Graff bar - trafndiaeth
TGCh Abercynon • 8:51 AM (Edited 8:52 AM) Due Nov 19

Casglwch ddata o fewn eich dosbarth ynglŷn â sut mae pawb yn teithio i'r ysgol.

Defnyddiwch Purple Mash i greu graff bar i gyflwyno'ch can...

Ychwanegwch ddolen gyswllt o'ch gwaith ar Purple Mash i C...

Add link

Link
TA1MTFkMmE2ZmEzMg==

Cancel **Add link**

Your work Assigned

+ Add or create

Mark as done

Private comments

Add private comment... ▶

Nawr bydd angen ychwanegu'r ddolen gyswllt rydych chi eisoes wedi arbed. Gallech wneud hyn trwy wasgu 'Paste' neu gan ddefnyddio'r llwybr byr 'Ctrl + V'. Yna gwasgwch y botwm 'Add link.'

Now you will need to insert the link that you've already saved. You can do this by pressing 'Paste' or by using the shortcut 'Ctrl + V.' Then press the 'Add link' button.

Graff bar - trafnidiaeth

TGCh Abercynon • 8:51 AM (Edited 8:52 AM)

Due Nov 19

Casglwch ddata o fewn eich dosbarth ynglŷn â sut mae pawb yn teithio i'r ysgol.

Defnyddiwch Purple Mash i greu graff bar i gyflwyno'ch canfyddiadau.

Ychwanegwch ddolen gyswilt o'ch gwaith ar Purple Mash i Classroom cyn gwasgu 'Turn in.'

Class comments



Add class comment...



Your work

Assigned



Purple Mash by 2S...

<https://www.purplem...>



+ Add or create

Turn in

Private comments



Add private comment...



Dylai'r ddolen gyswilt i'ch gwaith nawr ymddangos ar ochr dde'r dudalen. I orffen cofiwch i wasgu'r botwm 'Turn in' fel bod eich athro / athrawes dosbarth yn derbyn eich gwaith caled!

The link should now appear on the right hand side of the page. Finally to finish always remember to press the 'Turn in' button so that your class teacher receives a copy of your hard work!